

Parkheath

Sold on Service

Harman Drive NW2

£6,933 PCM (£1,600 per week) - Barnet Band G



Substantial 5 bedroom semi-detached family house

Peaceful cul-de-sac location

Accommodation arranged over 3 floors

Spacious kitchen/diner

Secluded 62' south facing rear garden

South Hampstead Office 020 7625 4567

West Hampstead Office 020 7794 7111

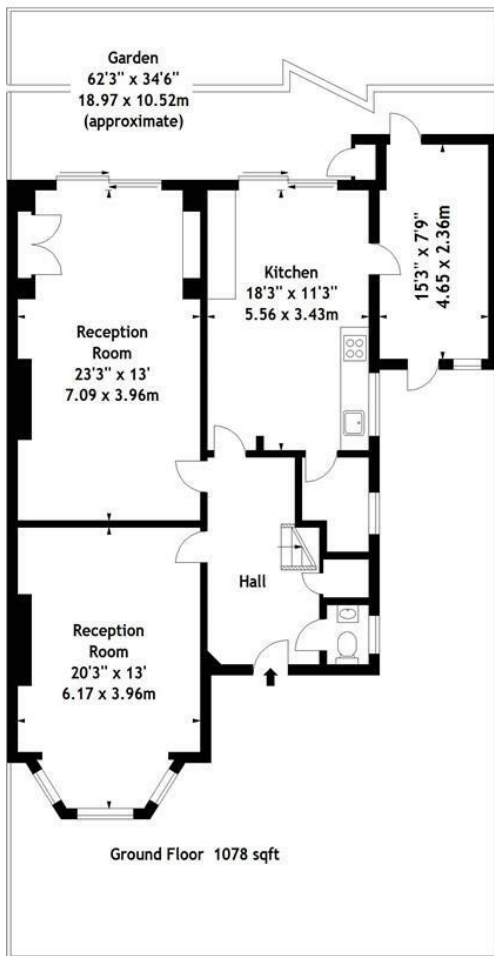
2548 Sq Ft / 236.71 Sq M

Desirable residential area within 'The Hocrofts'

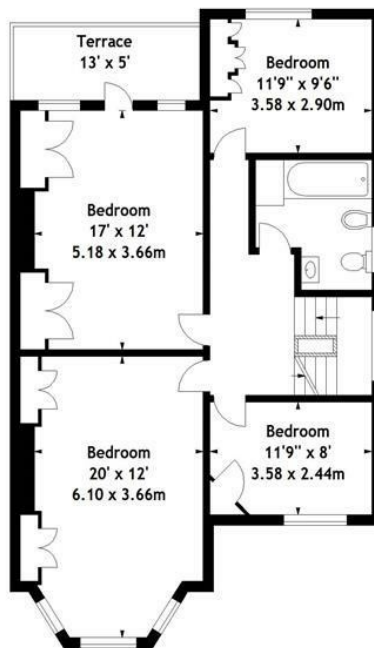
Two separate reception rooms with wood floors

2 bathrooms (1 en suite)

Driveway with off street parking for 2 cars



Harman Drive, NW2
Approx. Gross Internal Area
2548 Sq Ft - 236.71 Sq M
(including Storage)



First Floor 885 sqft



Second Floor 585 sqft

Measured in accordance with RICS guidelines. Every attempt is made to ensure accuracy, however all measurements are approximate. This floor plan is for illustrative purposes only and is not to scale.
© Datography Ltd 2014
Photographs * Floorplans * Virtual Tours
Tel: 0845 643 4401 www.datography.com

The particulars do not constitute part of an offer or contract. The particulars, including text, photographs and plans, are for the guidance only of prospective purchasers/tenants and must not be relied upon as statements of fact. The descriptions provided therein represent the opinion of the author and whilst given in good faith should not be construed as statements of fact. Nothing in these particulars shall be deemed a statement that the property is in good condition or otherwise or that any services or facilities are in good working order. All measurements are approximate